

- 1
- 2
- 3
- 4
- 5
- 6
- 7
- 8
- 9
- 10
- 11
- 12
- 13
- 14
- 15
- 16
- 17
- 18

**TYPES**

- Type **A**: without sealing washers
- Type **B**: with sealing washers

**Main specifications**

- AISI CF-8 stainless steel
- Sandblasted matte finish
- Sleeve bearing
- Plastic (PTFE)
- Carriage bolt DIN 603
- Stainless steel
- Cap nuts DIN 917 / Washers
- Stainless steel
- Seals
- Sealing washers
- Plastic (Polyacetal POM)
- Spacer ring
- Silicon, 40 ... 60 Shore A

**FEATURES AND APPLICATIONS**

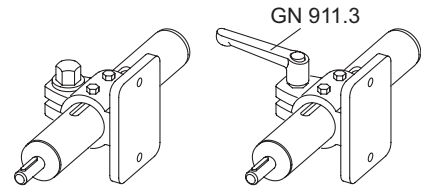
Flanged linear actuator connectors GN 146.16 are based on flanged connector clamps. The additionally provided mounting holes are used to connect to the drive key of a linear actuator. Bores with the designation **G** are equipped with sleeve bearings.

With the screw location **z**, the play of the guide bore d1 can be adjusted or the linear actuator connectors can be clamped after adjustment. Type B is equipped with seals at the screw locations.

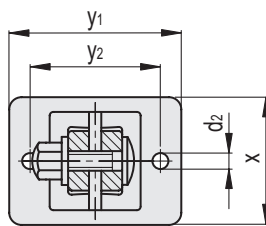
For quick clamping without tools, the cap nut can be replaced by the adjustable hand levers GN 911.3 (see page ).

**ACCESSORY**

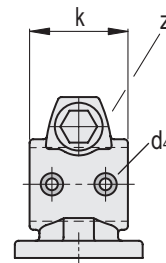
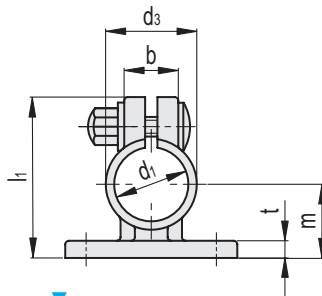
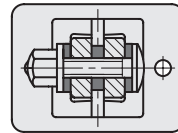
Adjustable Hand Levers GN 911.3 (see page ).



**GN 146.16-A**



**GN 146.16-B**



Conversion Table	
1 mm = 0.039 inch	
d1	
mm	inch
30	1.17

**GN 146.16-A**

Code	Description	d1 Bore with sleeve bearing	d2	d3	d4	b	k	l1	m	t	x	z	y1	y2	z Clamping kit	⚖️
GN.46981	GN 146.16-G30-A-4	G 30	6.5	37	M 4	22	40	66	30	7	52	M 8	70	53	GN 911.3-63 / GN 911.3-78	264

**GN 146.16-B**

Code	Description	d1 Bore with sleeve bearing	d2	d3	d4	b	k	l1	m	t	x	z	y1	y2	z Clamping kit	⚖️
GN.46982	GN 146.16-G30-B-4	G 30	6.5	37	M 4	22	40	66	30	7	52	M 8	70	53	GN 911.3-63 / GN 911.3-78	264

Tube connectors